

vtech®

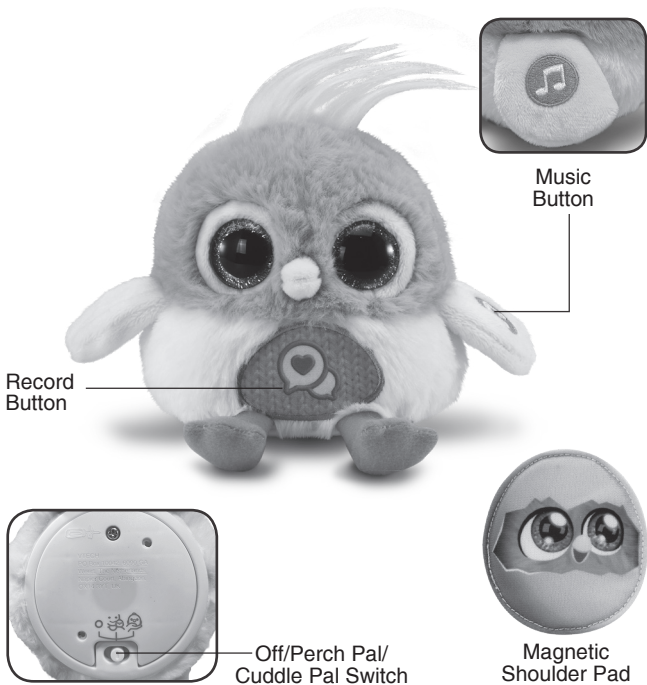
Parent's Guide

Gabbers™



INTRODUCTION

Thank you for purchasing the **Gabbers™**! Press the belly to record your voice and hear it back in a silly way. Press the wing button to hear fun bird sounds and music. **Gabbers™** is happy to perch on a shoulder, in a palm, on a table, or anywhere else. Take **Gabbers™** with you wherever you go!



Record Button

Music Button

Off/Perch Pal/
Cuddle Pal Switch

Magnetic
Shoulder Pad

INCLUDED IN THIS PACKAGE

- **Gabbers**
- Magnetic Shoulder Pad
- Parent's Guide

WARNING:

All packing materials such as tape, plastic sheets, packaging locks, removable tags, cable ties, cords and packaging screws are not part of this toy, and should be discarded for your child's safety.

NOTE: Please save this Parent's Guide as it contains important information.

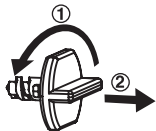
ATTENTION :

Pour la sécurité de votre enfant, débarrassez-vous de tous les produits d'emballage tels que rubans adhésifs, feuilles de plastique, attaches, étiquettes, cordons et vis d'emballage. Ils ne font pas partie du jouet.

NOTE : Il est conseillé de sauvegarder ce manuel d'utilisation car il comporte des informations importantes.

Unlock the Packaging Locks

- ① Turn the packaging lock counterclockwise several times.
- ② Pull out and discard the packaging lock.



GETTING STARTED

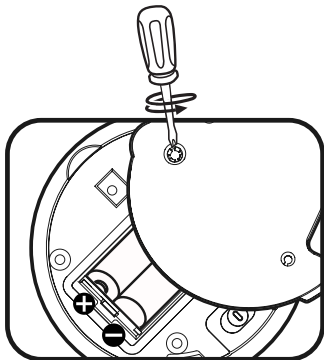
The batteries included are for demo purposes only. Please replace the low capacity Try Me batteries with new batteries for the best performance. Slide the **Off/Perch Pal/Cuddle Pal Switch** to the **Perch Pal or Cuddle Pal** position to start.

NOTE:

Playing at close range for a prolonged period of time may cause fatigue or discomfort. We recommend that children take a 15-minute break for every hour of play.

Battery Removal and Installation

1. Make sure the unit is turned Off.
2. Find the battery cover located on the back of the unit, use a screwdriver to loosen the screw and then open the battery cover.
3. Remove old batteries by pulling up on one end of each battery.
4. Install 2 new AAA (AM-4/LR03) batteries following the diagram inside the battery box. (For best performance, alkaline batteries or fully charged Ni-MH rechargeable batteries are recommended.)
5. Replace the battery cover and tighten the screw to secure.





WARNING:

Adult assembly required for battery installation.

Keep batteries out of reach of children.



ATTENTION :

Les piles ou accumulateurs doivent être installés par un adulte.

Tenir les piles ou accumulateurs hors de portée des enfants.

IMPORTANT: BATTERY INFORMATION

- Insert batteries with the correct polarity (+ and -).
- Do not mix old and new batteries.
- Do not mix alkaline, standard (carbon-zinc) or rechargeable batteries.
- Only batteries of the same or equivalent type as recommended are to be used.
- Do not short-circuit the supply terminals.
- Remove batteries during long periods of non-use.
- Remove exhausted batteries from the toy.
- Dispose of batteries safely. Do not dispose of batteries in fire.

RECHARGEABLE BATTERIES:

- Remove rechargeable batteries (if removable) from toy before charging.
- Rechargeable batteries are only to be charged under adult supervision.
- Do not charge non-rechargeable batteries.

PRODUCT FEATURES

1. Off/Perch Pal/Cuddle Pal Switch

To turn the unit **ON**, slide the **Off/Perch Pal/Cuddle Pal Switch** to the Perch Pal or Cuddle Pal position. To turn the unit **OFF**, slide the **Off/Perch Pal/Cuddle Pal Switch** to the **OFF ●** position.



2. Automatic Shut Off

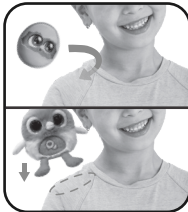
To preserve battery life, this toy will automatically power down after several seconds without input. The unit can be turned ON again by pressing any button.

NOTE: If the unit powers down while playing, please install a new set of batteries.

ACTIVITIES

1. Perch Pal Play

Slide the mode switch to Perch Pal. Place the magnetic shoulder pad on your shoulder under your shirt. Then, place Gabbers over your shirt above the magnetic shoulder pad. The magnetic shoulder pad will keep Gabbers perched on your shoulder. Press the Record Button or the Music Button to play with Gabbers (see #3 and #4 below).



2. Cuddle Pal Play

Slide the mode switch to Cuddle Pal. Connect the magnetic shoulder pad to the bottom of Gabbers for safekeeping. Cuddle with Gabbers or place Gabbers on a flat surface to play. Turn Gabbers upside down or shake Gabbers for fun reactions. Press the Record Button or the Music Button to play with Gabbers (see #3 and #4 below).



3. Record and Playback

There are two ways to record and change your voice. Gabbers can record and playback your voice in a silly way or translate your voice into bird tweets.

Silly Voice: Press the Record Button once. Wait for Gabbers' eyes to turn blue and the recording music to complete. Then, talk, sing or make funny sounds. Gabbers will then playback your recording in a silly way.

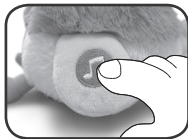
Bird Tweets: Press the Record Button two times quickly. Wait for Gabbers' eyes to turn blue and the recording music to complete. Then, talk, sing or make funny sounds. Gabbers will translate your recording into bird tweets.

Gabbers can record up to 10 seconds. If you finish your recording before 10 seconds, press the Record Button again to stop the recording and hear your silly playback.



4. Fun Sounds and Music

Press the **Music Button** on Gabbers' wing to hear delightful birdy music and fun bird sound effects.



CARE & MAINTENANCE

1. Keep the unit clean by wiping it with a slightly damp cloth.
2. Keep the unit out of direct sunlight and away from any direct heat sources.
3. Remove the batteries if the unit will not be in use for an extended period of time.
4. Do not drop the unit on hard surfaces and do not expose the unit to moisture or water.

TROUBLESHOOTING

If for some reason the unit stops working or malfunctions, please follow these steps:

1. Turn the unit **Off**.
2. Interrupt the power supply by removing the batteries.
3. Let the unit stand for a few minutes, then replace the batteries.
4. Turn the unit **On**. The unit should now be ready to use again.
5. If the unit still does not work, install a new set of batteries.

Environmental Phenomena

The unit may malfunction if subjected to radio-frequency interference. It should revert to normal operation when the interference stops. If not, it may become necessary to turn the power Off and back On, or remove and reinstall the batteries. In the unlikely event of an electrostatic discharge, the unit may malfunction and lose memory, requiring the user to reset the device by removing and reinstalling the batteries.

Impact de l'environnement

Une défaillance de fonctionnement de l'appareil peut survenir s'il est sujet à des interférences avec les fréquences radioélectriques. Le fonctionnement normal de l'appareil devrait reprendre avec l'arrêt des interférences. Si ce n'est pas le cas, il peut s'avérer nécessaire d'éteindre et rallumer l'appareil ou de retirer et réinstaller les piles. Dans l'éventualité peu probable d'une décharge électrostatique, un mauvais fonctionnement et une perte de mémoire de l'appareil peuvent se produire. L'utilisateur doit alors retirer et réinstaller les piles pour réinitialiser l'appareil.

CAUTION

Changes or modifications not expressly approved by the party responsible for compliance could void the user's authority to operate the equipment.

NOTE

This equipment has been tested and found to comply with the limits for a Class B digital device, pursuant to Part 15 of the FCC Rules. These limits are designed to provide reasonable protection against harmful interference in a residential installation. This equipment generates, uses and can radiate radio frequency energy and, if not installed and used in accordance with the instructions, may cause harmful interference to radio communications. However, there is no guarantee that interference will not occur in a particular installation. If this equipment does cause harmful interference to radio or television reception, which can be determined by turning the equipment off and on, the user is encouraged to try to correct the interference by one or more of the following measures:

- Reorient or relocate the receiving antenna.
- Increase the separation between the equipment and receiver.
- Connect the equipment into an outlet on a circuit different from that to which the receiver is connected.
- Consult the dealer or an experienced radio/TV technician for help.

IMPORTANT NOTE:

If the problem persists, please call our **Consumer Services Department** at **1-800-521-2010** in the U.S., **1-877-352-8697** in Canada, or by going to our website **vtechkids.com** and filling out our **Contact Us** form located under the **Customer Support** link. Creating and developing VTech products is accompanied by a responsibility that we take very seriously. We make every effort to ensure the accuracy of the information, which forms the value of our products. However, errors sometimes can occur. It is important for you to know that we stand behind our products and encourage you to contact us with any problems and/or suggestions you might have. A service representative will be happy to help you.

Supplier's Declaration of Conformity 47 CFR § 2.1077 Compliance Information

Trade Name: VTech®
Model: 5719
Product name: Gabbers™
Responsible Party: VTech Electronics North America, L.L.C.
Address: 1156 W. Shure Drive, Suite 200, Arlington Heights, IL 60004
Website: vtechkids.com

THIS DEVICE COMPLIES WITH PART 15 OF THE FCC RULES. OPERATION IS SUBJECT TO THE FOLLOWING TWO CONDITIONS: (1) THIS DEVICE MAY NOT CAUSE HARMFUL INTERFERENCE, AND (2) THIS DEVICE MUST ACCEPT ANY INTERFERENCE RECEIVED, INCLUDING INTERFERENCE THAT MAY CAUSE UNDESIRED OPERATION.
CAN ICES-003(B)/NMB-003(B)

**Visit our website for more
information about our products,
downloads, resources and more.**

vtechkids.com
vtechkids.ca

Read our complete warranty policy online at
vtechkids.com/warranty
vtechkids.ca/warranty

